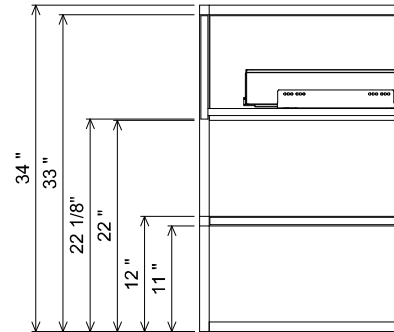
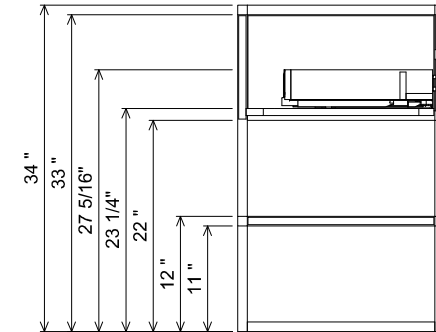


AT BANK SECTION



AT SINK CENTER SECTION



**NOT AVAILABLE IN POLISHED CHROME**



THE  
FURNITURE GUILD

ESTD 1984

0610-0660

WINTSTON

CURRENT AS OF: 11/01/2019

ALL DRAWINGS AND DIMENSIONS ARE SUBJECT TO CHANGE WITHOUT NOTICE AT THE DISCRETION OF THE MANUFACTURER. THE MANUFACTURER RESERVES THE RIGHT TO MAKE ADDITIONS, DELETIONS, AND MODIFICATIONS TO THE DRAWINGS AS THE MANUFACTURER MAY DEEM APPROPRIATE OR DESIRABLE. DIMENSIONS ARE APPROXIMATE AND MAY VARY WITH ACTUAL CONSTRUCTION. PLEASE CONTACT THE FURNITURE GUILD, INC. TO ENSURE DRAWING IS UP TO DATE.

THE INFORMATION CONTAINED IN THIS DRAWING IS THE SOLE PROPERTY OF THE FURNITURE GUILD, INC. ANY REPRODUCTION IN PART OR AS A WHOLE WITHOUT WRITTEN PERMISSION OF THE FURNITURE GUILD, INC. IS PROHIBITED.

**PREPARATION INSTRUCTIONS**

All vanities require solid blocking in the wall  
Plumbing supply and waste to be 24"H above finished floor  
Space for Undermount sink: 6.75"H



Finished Floor